



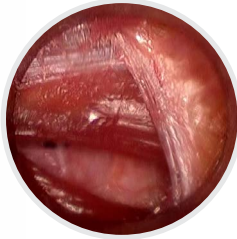
**Kii**<sup>®</sup>  
Abdominal Access Systems

# Kii Fios<sup>®</sup>

## First Entry Access System

THE ONLY INSUFFLATING OPTICAL PORT



Kii Fios Access System	Insufflation Needle	5mm Access System	12mm Access System
3mm			
			
			

**Minimal Fascial Defect**

True nonbladed access allows for reapproximation of tissue layers with minimal fascial defect once the trocar is removed.

**Minimal Penetration with Rapid Insufflation**

Only 3mm of trocar penetration is needed to initiate insufflation.

# Kii

## Balloon Blunt-Tip Access System

INNOVATIVE BLUNT-TIP TECHNOLOGY

---



### Suture Ties

Maximize instrument reach and facilitate port-site closure.



Now in the 5mm size – the smallest Hasson trocar available!

### Gel Cone

Enhances instrument articulation.

### Non-Latex Balloon

Provides stable anchoring throughout lengthy procedures while maximizing working space and visibility.

### Optical Blunt-Tip Obturator

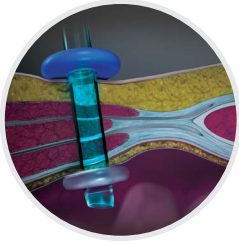
Facilitates direct visualization during trocar placement.

# Kii

## Advanced Fixation Technology

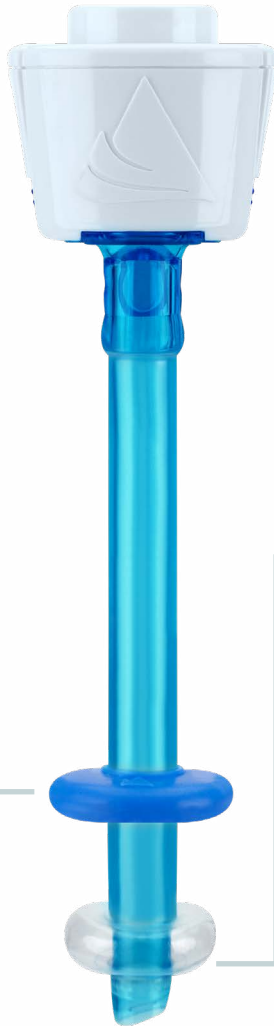
SUPERIOR RETENTION

---



### Retention Disk

Reduces migration of the trocar sleeve into the abdominal cavity.



### Non-Latex Balloon

Provides unmatched retention.  
Maximizes working space and visibility.  
Provides pressure on the incision site, potentially reducing port-site bleeding.  
Maintains stability throughout procedures.

# Kii

## Low-Profile Access System

SLIM, LIGHTWEIGHT DESIGN



### Low-Profile Seal Housing

Optimizes external working space, minimizing interference with adjacent ports.



Low-Profile Kii Seal



Standard 5mm Kii Seal

### Z-Thread Sleeve with Extended Threads

Maintains retention at shorter depths, maximizing internal working space and visibility.

### Kii Low-Profile Access System

Reorder No.			Size
<i>Optical</i>	<i>Bladed</i>	<i>Sleeve</i>	
CTR21	CTB21	CTS28	5 x 55mm
CTR23	CTB23	N/A	5 x 55mm, dual pack
CTR22	CTB22	CTS29	5 x 100mm
CTR24	CTB24	N/A	5 x 100mm, dual pack

# Kii

## Shielded Bladed Access System

SMOOTH, CONTROLLED ENTRY



### Intuitive Switch Design

Provides a clear indication of shield position.



Deactivated



Activated

### Kii Shielded Bladed Access System

Reorder No.		Size
	<i>Advanced Fixation</i>	<i>Z-Thread</i>
N/A	CTB05	5 x 55mm
CFB03	CTB03	5 x 100mm
CFB01	CTB01	5 x 150mm
N/A	C0Q61	8 x 100mm
CFB33	CTB33	11 x 100mm
CFB73	CTB73	12 x 100mm
CFB71	CTB71	12 x 150mm

# Kii

## Optical Access System

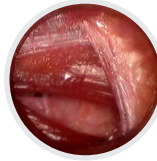
UNPARALLELED OPTICAL CLARITY



### Tissue Reapproximation



Initial  
Withdrawal



Midway



Complete  
Withdrawal

### Kii Optical Access System

Reorder No.		Size
<i>Advanced Fixation</i>	<i>Z-Thread</i>	
N/A	CTR05	5 x 55mm
CFR03	CTR03	5 x 100mm
CFR01	CTR01	5 x 150mm
N/A	COQ19	8 x 100mm
CFR33	CTR33	11 x 100mm
N/A	CTR34	11 x 100mm, handled
N/A	COR83	12 x 60mm
CFR73	CTR73	12 x 100mm
CFR74	CTR74	12 x 100mm, handled
CFR71	CTR71	12 x 150mm
N/A	CTR72	12 x 150mm, handled
N/A	COR37	15 x 100mm
CFR39	COR39	15 x 150mm



## Kii Fios First Entry Access System

Reorder No.		Size
	<i>Advanced Fixation</i>	<i>Z-Thread</i>
CFF05	N/A	5 x 75mm
CFF03	CTF03	5 x 100mm
CFF04	CTF04	5 x 100mm, handled
CFF01	CTF01	5 x 150mm
CFF33	CTF33	11 x 100mm
CFF34	CTF34	11 x 100mm, handled
CFF73	CTF73	12 x 100mm
CFF74	CTF74	12 x 100mm, handled
CFF71	CTF71	12 x 150mm



## Kii Balloon Blunt-Tip Access System

Reorder No.		Size
	<i>Blunt-Tip</i>	
COQ20		5 x 100mm
COR47		12 x 100mm
COR50		12 x 130mm



## Kii Sleeve with Advanced Fixation

Reorder No.		Size
	<i>Advanced Fixation</i>	
CFS03		5 x 75mm
CFS02		5 x 100mm
CFS01		5 x 150mm
CFS12		11 x 100mm
CFS22		12 x 100mm
CFS21		12 x 150mm

Visit [appliedmedical.com/trocars](https://www.appliedmedical.com/trocars) for more information.

© 2021 Applied Medical Resources Corporation. All rights reserved.  
 Applied Medical, the Applied Medical logo design, and marks designated with the symbol ® are trademarks of Applied Medical Resources Corporation, registered in one or more of the following countries: Australia, Canada, Japan, South Korea, the United States, the United Kingdom, and/or the European Union.  
 254155-EN-USA-C

